



# INS|Info+

Where the world meets

## Student Liaison Committee (SLC)

**International  
Neuropsychological  
Society**  
*Founded in 1967*

**February 2023**



**INS Annual Meeting  
San Diego, California USA  
February 1 - 4, 2023**

**INS Mid-Year Meeting  
Taipei, Taiwan  
July 6 - 8, 2023**

**INS Annual Meeting  
New York, USA  
February 14 - 17, 2024**



801 487 0475



[slc@the-ins.org](mailto:slc@the-ins.org)



[www.the-ins.org](http://www.the-ins.org)

# Society Information

## About INS



The International Neuropsychological Society (INS) was founded in 1967 as a scientific and educational organization dedicated to enhancing communication among the scientific disciplines which contribute to the understanding of brain-behavior relationships. The Society currently has more than 4700 members throughout the world and from various areas of practice.

The mission of the International Neuropsychological Society is to promote the international and interdisciplinary study of brain-behavioral relationships throughout the lifespan. The Society's emphasis is on science, education, and the applications of scientific knowledge.

Membership in the Society includes an online subscription to the Journal of the International Neuropsychological Society: JINS, which is currently published ten times per year (with two additional, online-only supplements). The Society holds two meetings each year, including its Annual Meeting every February in North America, and its Mid-Year Meeting every July in a different location worldwide.

## About Student Liaison Committee (SLC)

### History of the INS-SLC

At the 38th Annual Meeting of INS in Acapulco in 2010, the Board or Governors organized a meeting to solicit comments from students and trainees about how to better serve associate members and increase their involvement. As a result of this meeting, the Society formed a student-run standing committee with specific goals to address student and trainee professional development needs, foster student contributions to neuropsychological science, and provide opportunities for student involvement and leadership within the INS.



You can connect with the **INS-SLC** on their [Facebook](#) page or [Twitter](#) and check the latest updates, pose questions regarding training, and more on the [Google Group](#) or via [e-mail](#).



@studentins



@ins\_slc



bit.ly/3bTprfr



slc@the-ins.org

# Student Liaison Committee Representatives



**Taylor Jenkin**

*Co-Chair*

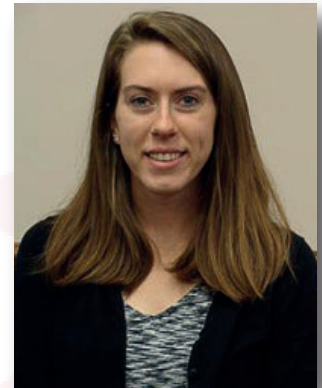
📍 Melbourne, Australia



**Josh Fox-Fuller**

*Co-Chair*

📍 Atlanta, USA



**Stacey Brothers**

*Annual Meeting  
Program  
Representative*

📍 Salt Lake City, USA



**Li Yu Hsuan**

*Mid-Year Meeting  
Program  
Representative*

📍 Chiayi, Taiwan



**Fareshte Erani**

*Communications &  
Outreach  
Representative*

📍 Philadelphia, USA



**Maximiliano Folmer**

*Member at Large*

📍 Padua, Italy



**Amber Ayton**

*Global Engagement  
Representative*

📍 Melbourne, Australia

To learn more about us, please visit <https://bit.ly/3cOT82T>



## STUDENT/TRAINEE SPOTLIGHT

### Call for Kudos

The INS-SLC Representatives present **Call for Kudos** – calling all students and trainees from **around the globe** to nominate your peers or share your own research and interests! A few times a month, we will be featuring INS students and trainees on our social media sites (Facebook/Twitter)! If you'd like to participate or nominate a peer, send an email to [slc@the-ins.org](mailto:slc@the-ins.org) with the following information:

- Name (nominee), year/position, school/training program, headshot
- Kudos (e.g., recently published paper, recently awarded grant or award, recent initiative, recent talk, etc.)
- Research interests
- Fun facts (e.g., hometown, hobbies, interests, etc.)

### MEET THE PREVIOUS STUDENTS/TRAINEES SPOTLIGHTED!



#### JÉSSICA OROBIO

Kudos: The 2019 recipient of the Children's Medical Center Cultural Diversity Fellowship. In her role, Jessica helped to establish new studies for test development in bilingual (Spanish/English) children.



#### AMANDA WISINGER

Kudos: Amanda was recently awarded funding through the Chicago Association for Research and Education in Science (CARES) EQUITY Fund for her research at Edward Hines, Jr. VA Medical Center, where she is completing an Advanced Psychotherapy Externship on the Spinal Cord Injury and Disorders (SCI/D) Unit. Currently, she and her supervisor, Dr. Monica Stika, are working on publishing a manuscript that highlights the challenges to understanding the role of cognition in the functional assessment of patients living with SCI/D in acute rehabilitation settings.



#### MARIAM HUSSAIN

Kudos: Mariam recently published a first author paper on the association between apathy and poor abstinence self-efficacy in individuals with methamphetamine dependence (doi:10.1016/j.abrep.2020.100331).



#### JERMON DRAKE

Kudos: Jermon was recently awarded a diversity supplement through the NIA. Through the supplement, he aims to explore whether physical activity, in the form of African dance, improves executive function, increases cerebral blood flow, and whether changes in cerebral blood flow mediate executive function improvements in older African Americans.



#### DENISE CARBALLEA

Kudos: Denise recently published a paper entitled "Considerations regarding sexuality for clinicians working with TBI patients" in the Florida Psychologist & Co-Author "Fostering resilience in college students amid the COVID-19 pandemic" on Eye on Psi Chi magazine. She is also now a certified brain injury specialist (BIAA)!

## “STUDENT HIGHLIGHTS” MINI-WEBINAR SERIES

The INS-SLC Representatives launched the “Student Highlights” **Mini-Webinar Series**, a project open to In-Training members of INS from all **around the globe**. This is a recurring initiative so please check our social medias (Facebook/Twitter) to be updated on the latest dates, information and more!

### “Student Highlights” Mini-Webinar Series

- Pre-recorded videos (15-30min) hosted by Student Liaison Committee (SLC) Representatives
- To present on your original research and/or neuropsychology interests
- **Benefits:** an opportunity to practice your presentation skills; connect with other students around the world; potentially build international research collaborations; valuable experience to add on your resume...and more!
- The pre-recorded video will be posted on the INS website and will be available on-demand.



Watch here the previous winners of the Mini-Webinars!

#### The Prevalence of Acute Stress Disorder and PTSD among Dementia Caregivers

##### Present Study

- Purpose of this study: survey dementia caregivers to gather a prevalence rate of those suffering from acute stress disorder or PTSD
  - Since PTSD can occur anytime after one month of the onset of distress, former caregivers will also be surveyed to examine if a trend in symptom onset can be identified
- Hypothesis: There is a prevalence of caregivers that suffer from acute stress disorder and PTSD

#### Sensory Hypersensitivity After Stroke – A commonly missed stroke symptom

- A. I get **distracted** when there is a lot to see around me
- B. I get **distracted** when there is a lot to see around me



For example:  
By fast moving images on the television  
When there are a lot of people around me



For example:  
When I have a conversation in a busy restaurant  
While driving in a car  
In a supermarket  
When there are a lot of people around me

Genna M. Mashinchi - Mini-Webinar - June 2021

Hella Thielen- Mini-Webinar - December 2021

## SLC-HOSTED EVENTS AT THE NEW ORLEANS 2022 MEETING



### INS | NEW ORLEANS | 2022



#### **INS-SLC Live Student Welcome**

A live welcome with raffle prizes!



#### **Society for Black Neuropsychology Social Event**

SBN's 2022 plans, membership, and networking!



#### **Women in Neuropsychology Social & Mentorship Panel**

Included a raffle for textbooks and 1:1 mentoring with prominent neuropsychologists!



#### **INS Student Mentorship Event**

Live mentorship from a chosen neuropsychologist!



#### **INS-SLC Student Trivia & Social**

Trivia, prizes and a opportunity to chat with other trainees in breakout rooms! In collaboration with ANST & ANA!



#### **INS-SLC Live Student Poster Presentations**

INS poster presentations to learn about all the great work from students in INS!

Click [here](#) to check more details of these previous events!



## INS | NEW ORLEANS | 2022

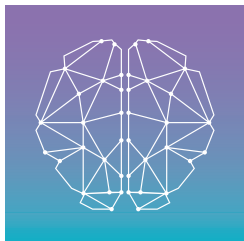


### INS-SLC Student Research Award Winners:

- **Nicolás Corvalán** (Argentina): Cognitive Consequences of COVID-19: Results from A South American Cohort Study
- **Samantha J Feldman** (Canada): Social Cognition and Social-Emotional Outcomes Following Pediatric Stroke
- **Christine L Ginalis** (USA): Long-term Impact of Maternal Mental Health During Pregnancy on Subsequent Child Autonomic Modulation and Emotional Regulation
- **April C May** (USA): Nicotine and Cannabis Co-Use and Associations with White Matter Health in the Developing Adolescent Brain
- **Michelle Melis** (Belgium): The Impact of Mindfulness-Based Interventions On Brain Functional and Structural Connectivity: A Systematic Review

Click [here](#) to visit the dedicate website of the INS-SLC Student Research Awards Winners at the INS New Orleans

## AWARDS AT THE 2022 INS MID-YEAR MEETING: BARCELONA



**International Neuropsychological Society**  
**Global Innovations in Science and Practice**  
**2022 Meeting**  
**Barcelona, Spain | July 6 – 8, 2022**



### INS-SLC Student Research Award Winners:

- **Jessica Bruijell**, Maastricht University, Netherlands  
Task-Induced Subjective Fatigue and Resting-State Striatal Connectivity Following Traumatic Brain Injury
- **Marta Godoy Gonzalez**, Hospital Universitari Parc Taulí, Spain  
Objective and Subjective Cognitive Deficit in COVID-19 Critically Ill Survivors One Year After ICU Discharge
- **Emma Segura**, Hospital Universitari Parc Taulí, Spain  
Enriched Music-Supported Therapy in the Rehabilitation of Patients with Chronic Stroke
- **Yolanda Balboa Bandeira**, University of Deusto, Spain  
Transcranial Electrical Stimulation Techniques Comparison on Foreign Language Learning: a Pilot Study
- **Anne Buunk**, University Medical Center Groningen, Netherlands  
Emotion Recognition in Low-Grade Glioma Patients Before and After Surgery

Click [here](#) to check the program of the INS Mid-Year Meeting:  
Barcelona



## INS NEWSLETTER

The INS-SLC Representatives collaborate to the INS Newsletter by featuring articles.

Click below to read the most recent ones!

### Students & Trainees

#### Pursuing Graduate Studies Abroad: Two International Interviews

Maximiliano Folmer, Lic. in Psychology; Member-at-Large, INS Student Liaison Committee

I am thrilled to continue working for the INS Student Liaison Committee (INS SLC) and to start this next journey as the new Member-At-Large for the 2022-2024 term. As such, I am pleased to present to you two interviews with master's students in the program in Cognitive Neuroscience and Clinical Neuropsychology of the University of Padua, Italy. To provide some context, this program is a limited access master's degree in which only 50 students are selected each year, composed of 40% of non-European citizens, and of the remaining 60%, more than half are not from Italy.

In this issue, I curated the first interview with **Milena Spoa (BSc)**, who was selected as the first international student of over 190 non-European eligible applicants residing abroad. In the next issue, I will present the other interview with **Maria Luisa Ndong Asue (BSc)**, who was selected as first student over 100 European eligible applicants. Having in mind this and our Society's goal of promoting the international and interdisciplinary study of brain-behavioral relationships is that I hope that their personal and professional experience in this field will serve as inspiration for many of our students and trainee members who are eager to continue their professional development abroad. Following the steps of my predecessor, Josh Fox-Fuller, and his advocacy for our trainees and student members, I would like to welcome you to write me to chat about your interests on topics that you would like to be presented in the Student and Trainee section of the upcoming issues of the INS Member Newsletter. I can be contacted by email at [maximiliano.folmer@studenti.unipd.it](mailto:maximiliano.folmer@studenti.unipd.it).



[@folmermax](https://twitter.com/folmermax)

### Students & Trainees

#### Teleneuropsychology in the COVID-19 Pandemic: An Interview

Joshua Fox-Fuller, MA, Outgoing INS SLC Member at Large; Boston University, Boston, MA, USA

In this article, I interview researchers based in United Kingdom who had to change their neuropsychology research protocol for the HHealth and Ageing Data IN the Game of football (HEADING) study due to public-health related lockdowns during the spring and summer of 2020.

In January of 2021, this research team published a study on the feasibility of [assessing the Preclinical Alzheimer Cognitive Composite \(PACC\) score through video-conferencing](#). Giulia Seghezzo (GC) was first-author on this article, and Dr. Valentina Gallo (CG) was the corresponding senior author. The study was also discussed by myself and Dr. Lucia Crivelli with of the INS Teleneuropsychology Special Interest Group during a journal club meeting.

In addition to the clinical changes that occurred during the early months of the COVID-19 pandemic, many research teams were forced to think creatively about how to continue their neuropsychology research using remote testing protocols. While the Inter Organizational Practice Committee (IOPC) provided [recommendations](#) for clinical neuropsychological practice during the

performing research while expanding my skillset as an epidemiologist. I am currently assisting in the COVID-19 response for England as an epidemiologist and it has been an exciting change from my usual training!

**VG:** I trained as clinical neurologist, but went almost immediately into epidemiological



[@joshfoxfuller](https://twitter.com/joshfoxfuller)



INS Member Newsletter – Issue 2  
June 2022

[READ HERE](#)



INS Member Newsletter – Issue 1  
April 2022

[READ HERE](#)

# INS San Diego Meeting



## *Serendipity and Science*

International Neuropsychological Society  
San Diego | February 1-4, 2023

### INS PROGRAM HIGHLIGHTS

#### Keynotes:

- Plenary A: Presidential Address: Anesthesia: A Wake-Up Call. Part 2. Developmental Risk or Resilience? – **Presenter: Ida Sue Baron**
- Plenary B: The Pons is a Significant Neural Correlate of Affective Processing – **Presenter: Tatia M.C. Lee**
- Plenary C: Developing Tools for Global Neuropsychological Assessment – **Presenter: David J. Schretlen**
- Plenary D: Birch Lecture: Networking towards a Global Neuropsychology: An Invitation to Action – **Presenter: Deborah Koltai**
- Plenary E: Learning from patients: people who have changed my way of thinking – **Presenter: Barbara Wilson**
- Plenary F: Timing of Influences on Brain and Cognition: a Lifespan Perspective – **Presenter: Kristine Beate Walhovd**
- Plenary G: The Faithful Brain – **Presenter: Jordan Grafman**

#### Invited Symposia:

- Pediatric Neuropsychology Medical Advances and Life Span Outcomes, **chaired by Celiane Rey-Casserly**
- Traumatic Brain Injury: Highlighting the Contributions of Dr. Harvey S. Levin Ph.D., ABPP-CN, FACSM 1946 – 2022, **chaired by Maya Troyanskaya**
- The Need for a Highly Individualized Approach to Brain Mapping: Neuroanatomical, Lifespan and Cultural-Language Considerations, **chaired by David S. Sabsevitz**
- Innovations in Infant, Toddler, and Young Child Neuropsychological Models of Care, **chaired by Natasha N. Ludwig**

#### 3 Hour CE Workshops:

- CE Workshop 01: Mindfulness Meditation Induced Analgesia Engages Multiple Unique Brain Mechanisms – **Presenter: Fadel Zeidan**
- CE Workshop 02: Bi/Multilingualism and its Impact on Stroke/Neurodegenerative Disease – **Presenter: Suvarna Alladi**
- CE Workshop 03: Stroke in the Developing Brain: Mechanisms, Outcomes, and Intervention – **Presenter: Robyn Westmacott**
- CE Workshop 04: Cancer Survivorship Across the Lifespan: Mechanisms and Modifiable Factors – **Presenter: Kevin Krull**
- CE Workshop 05: Technology and Cognition: Examining new trends and opportunities for neuropsychology – **Presenter: Maria T. Schultheis**
- CE Workshop 06: The Cumulative Burden of Congenital Heart Disease Across the Lifespan: Implications for Neuropsychologists in Pediatrics Through Geriatrics – **Presenters: Adam R. Cassidy, Jacqueline H. Sanz, Kelly R. Wolfe**

...AND MORE!

**CHECK OUT THE DEDICATED WEBPAGE TO STAY UP  
TO DATE ON THE SAN DIEGO MEETING!**

# INS San Diego Meeting

## ACCOMMODATIONS

### DISCOUNTED GUEST ROOM RATES:

*Available January 29 thru February 6, 2023:*

Single Occupancy: \$209.00

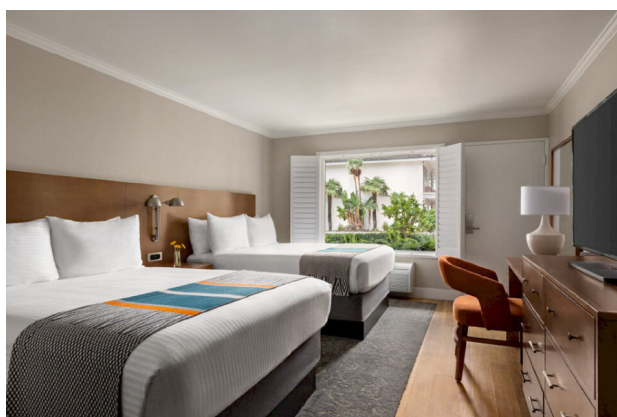
Double Occupancy: \$209.00

Triple Occupancy: \$219.00

Quadruple Occupancy: \$229.00

Triple Occupancy: \$219.00

Quadruple Occupancy: \$229.00



- To receive the discounted INS room rate at the Town and Country Resort San Diego, **book your room by the cutoff date, January 10, 2023 at midnight (EST).**

- To book your room online, in the INS/ ICCTF room block at the Town and Country Resort San Diego, visit <https://book.passkey.com/event/50369165/owner/27934/home> or, contact the hotel's reservations department by calling 800-772-8527, please note you need to press #2 for group/convention reservation, and tell them you are an attendee of the International Neuropsychological Society (or INS) or the International Cognition & Cancer Task Force (or ICCTF) meetings.hotel stay.

### Town and Country Resort San Diego

Visit the Town and Country Resort [Website](#)

**Address:** 500 Hotel Circle North San Diego, California, United States, 92108

**Contact Information:** Phone: [+1.619.291.7131](tel:+16192917131) Fax: [+1.619.291.3584](tel:+16192913584)

## AIRPORT & GROUND TRANSPORTION

The hotel does not provide shuttle service



### [San Diego International Airport \(SAN\)](#)



**Travel time from hotel:** Approximately a 10-minute drive without traffic.



**Distance from hotel:** 5.1 miles



**Estimated taxi fare per airports website:** [\\$24-\\$32 USD \(one-way\) plus a \\$2.00 airport access fee for each metered taxi trip.](#)



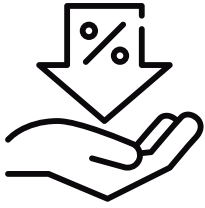
**Estimated Lyft fare:** [\\$20-\\$30 USD \(one-way\)](#)



**Public Bus Service:** [More Info Here](#)



# In-Training Membership Benefits



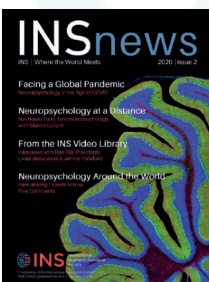
**Discounted Registration & CE Rates:** at both our yearly meetings.



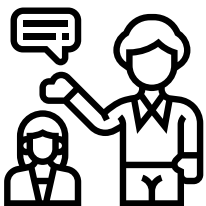
**Become a Local Student Representative:** As an extension of the INS-SLC you can represent and serve as an INS contact in for students/trainees interested in neuropsychology in geographic region.



**Free Electronic Access to JINS:** Available ONLY to INS members! Electronic access to JINS includes all previous years of publication and access to discounted print copies directly through Cambridge.



**INS Newsletter Subscription:** Exclusively delivered to your inbox, and keeping you current with both INS news and Neuropsychology events from around the globe.



**Connect with an INS Mentor:** Find a neuropsychology mentor within INS to answer your questions about neuropsychology training and help you network within the global neuropsychology community.



# In-Training Membership Benefits



**INS Student Google Group:** Join the INS Student Members network and communicate with exclusive access to the INS Student Community Group.

After becoming a member you will be added to the SLC e-mail listserv and receive regular communication and updates directly from the INS-SLC with announcements specific to neuropsychology students/trainees, including information about student events at INS meetings and opportunities for networking and education throughout the year.

**Get Involved:** Become active with committees or board leadership, participate in Special Interest Groups (SIGs) and help guide the future of INS.

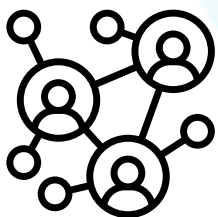
You can join any of these SIGs:

## SIGs

- Brain Injury
- Cultural Neuropsychology
- Dementia
- Epilepsy
- ... and more!

As a member, you can also submit a proposal to start a new SIG in your area of interest!

To know more, please visit <https://bit.ly/3fEeZKS>



**Expand Your Network:** Meet and get to know fellow members from all over the globe by attending an INS meeting, or through the expanded INS website.

# In-Training Membership Benefits



**Matthews Fund & Book Depository:** Give back to your community and help support neuropsychology and educational programs in developing countries.



**Prestigious Awards:** Nominate or be recognized for work in the field of neuropsychological science and education.

To know more, please visit <https://bit.ly/3kyjOsW>



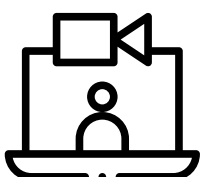
**Discounts & Offers on Videos, Books and Journals:** INS Members get access to promotional codes for great publisher, journal and INS video discounts.



**Discounted Registration at Related Meetings:** for other select meetings (e.g., International Brain Injury Association).



**INS Member Directory:** Exclusive online access for members only.



**Video Interviews of Leaders in Neuropsychology:** Access the INS Video Archive Project interviews, featuring major thought leaders in the field for FREE.

# Memberships & Application



**Professional Member:** A person is eligible for professional membership if a significant proportion of his/her activities are devoted to neuropsychology or related fields (e.g., psychology, rehabilitation psychology, neuroscience, medicine, speech therapy, occupational therapy, physical therapy, etc.) and he/she possesses the qualifications (degrees, certifications, or other requirements) consonant with his/her profession in the country of origin. Professional members have the power to vote in Society elections and may hold office in the Society. Professional membership dues range from \$30 – \$150 depending on country of residence.



**In-Training Member:** A person is eligible for in-training membership if he/she is currently actively pursuing a degree (Doctoral degree, Bachelor's degree, or equivalent) at a degree-granting institution or currently serving in a post-doctoral fellowship, internship, or residency program. In-training members do not have the power to vote in Society elections and may not hold office in the Society. Once a member completes his/her training and becomes a practicing professional, his/her membership should be upgraded to a professional membership. In-training membership may be maintained for a maximum of 6 years. Associate membership dues range from \$15 – \$45 depending on country of residence



**Emeritus Membership:** An individual who has been a member of the Society for at least 10 years, has reached the age of 65 and has retired from active practice may qualify for emeritus membership. Emeritus members may vote in elections and may hold office in the Society. Emeritus membership dues range from \$30 – \$75 depending on country of residence.



<https://bit.ly/2CT7DW7>



**INS**

**International  
Neuropsychological  
Society**

*Founded in 1967*

A Publication of the International Neuropsychological Society  
2319 Foothill Drive, Suite 260 | Salt Lake City, UT 84109

Designed by Maximiliano Folmer